



Woodberry Avenue, Winchmore Hill, Winchmore Hill, N21
Chain Free £800,000 Freehold

Anthony Webb
ESTATE AGENTS

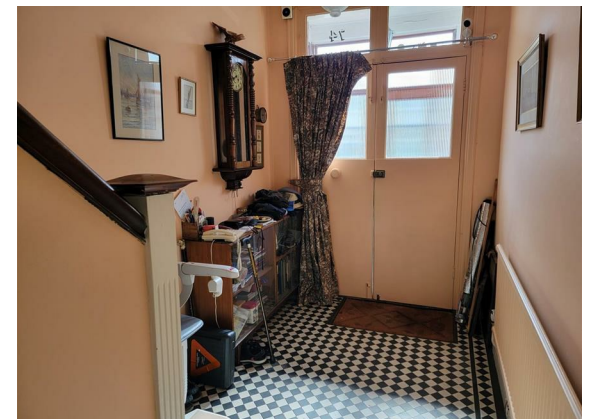
Woodberry Avenue, Winchmore Hill, Winchmore Hill, N21 3LB

Three bedroom Edwardian terrace house consisting of two spacious receptions, breakfast room, kitchen, ground floor guest w.c, first floor bathroom and separate w.c, off street parking and 90ft mature rear garden. The property requires updating and offers great potential to extend and create a wonderful family home in a sought after location.

Woodberry Avenue is a very popular residential turning close to the Broadway shops, restaurants, bus routes and mainline station into Finsbury Park and Moorgate. Winchmore Hill Green and Palmers Green high street are also within easy walking distance from the property. Other amenities close by include Sainsbury's supermarket, Grovelands Park and well-regarded local schools.

Enfield Council tax band F

- Three bedrooms
- Edwardian terrace house
- Two receptions
- Breakfast room
- Kitchen
- Ground floor w.c
- Off street parking
- Rear garden



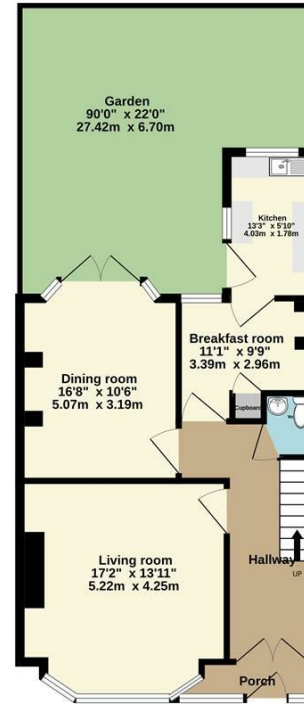
Woodberry Avenue Winchmore Hill Winchmore Hill N21 3LB

Gross Internal Area: 1347.00 sq ft

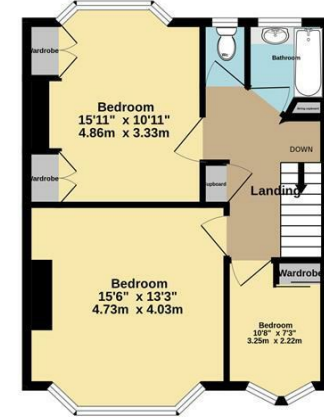


Energy Efficiency Rating		Current	Potential
Very energy efficient - lower running costs			
(92 plus) A			87
(81-91) B			
(69-80) C			
(55-68) D		47	
(39-54) E			
(21-38) F			
(1-20) G			
Not energy efficient - higher running costs			
England & Wales EU Directive 2002/91/EC			
Environmental Impact (CO ₂) Rating		Current	Potential
Very environmentally friendly - lower CO ₂ emissions			
(92 plus) A			
(81-91) B			
(69-80) C			
(55-68) D			
(39-54) E			
(21-38) F			
(1-20) G			
Not environmentally friendly - higher CO ₂ emissions			
England & Wales EU Directive 2002/91/EC			

Ground floor
725 sq.ft. (67.4 sq.m.) approx.



1st floor
621 sq.ft. (57.7 sq.m.) approx.



TOTAL FLOOR AREA: 1347 sq ft. (125.1 sq m.) approx.
Whilst every attempt has been made to ensure the accuracy of the floorplans contained herein, measurements of doors, windows, rooms and any other items are approximate and no responsibility is taken for any error, omission or mis-statement. This plan is for illustrative purposes only and should be used as such by any prospective purchaser. The services, systems and appliances shown have not been tested and not guaranteed as to their operability or efficiency can be given.
Made with Metaplan ©2024

Property particulars as supplied by Anthony Webb Estate Agents are set out as a general outline in accordance with the Property Misdescriptions Act (1991) only for the guidance of intending purchasers of lessees, and do not constitute any part of an offer or contract. Details are given without any responsibility, and any intending purchasers, lessees or third parties should not rely on them as inspection or otherwise as to the correctness of each of them. We have not carried out a structural survey and the services, appliances and specific fittings have not been tested. All photographs, measurements, floor plans and distances referred to are given as a guide only and should not be relied upon for the purchase of carpets or any other fixtures statements or representations of fact, but must satisfy themselves by or of fittings, gardens, roof terraces, balconies and communal gardens as well as tenure and lease details cannot have their accuracy guaranteed for intending purchasers. Lease details, service ground rent (where applicable) are given as a guide only and should be checked and confirmed by your solicitor prior to exchange of contracts. no person in the employment of Anthony Webb has any authority to make any representation or warranty whatever in relation to this property.

348 Green Lanes, Palmers Green, London N13 5TJ
020 8882 7888
palmersgreen@anthonywebb.co.uk
anthonywebb.co.uk

Anthony Webb
ESTATE AGENTS